

16th Asian Sailing Championships 2014

1st-6th July 2014, Incheon , Korea

The organizing authority is the Korean Sailing Federation supported by Incheon Asian Games Organizing Committee (IAGOC)

SAILING INSTRUCTIONS

1 RULES

- 1.1 The regatta will be governed by the rules as defined in *The Racing Rules of Sailing*.
- 1.2 No national authority prescriptions will apply.
- 1.3 The Equipment Rules of Sailing and current class rules of competing classes will apply except that class rules on class association membership and championships rules will not apply.
- 1.4 If there is a conflict between languages the English text will take precedence.

2 ADDITIONAL IDENTIFICATION

- 2.1 Each day while racing, the first, second and third boats in series scores at the beginning of the day shall display a yellow, blue and red ribbon on the masts respectively. The organizing authority will supply the ribbon and instructions for their use.

3 CAMERAS AND ELECTRONIC EQUIPMENT

Boats may be required to carry cameras, sound equipment and/or positioning equipment as specified by the organizing authority.

4 NOTICES TO COMPETITORS

Notices to competitors will be posted on the official notice board located in front of the Regatta Office Building.

5 CHANGES TO SAILING INSTRUCTIONS

Any change to the sailing instructions will be posted before 0900 on the day it will take effect, except that any change to the schedule of races will be posted by 2000 on the day before it will take effect.

6 SIGNALS MADE ASHORE

- 6.1 Signals made ashore will be displayed near the boat park. When a signal is displayed over an area or class flag it applies to that area or class only.
- 6.2 When flag AP is displayed ashore, '1 minute' is replaced with 'not less than 35 minutes' for racing areas. Boats shall not to leave the harbour until this AP is lowered. This changes Race Signal AP.
- 6.3 When flag Y is displayed ashore, rule 40 applies at all times while afloat. This changes the Part 4 preamble.

7 SCHEDULE

- 7.1 Dates of racing:

1st July	Registration and Measurement
2nd July	Racing
3rd July	Racing
4th July	Racing
5th July	Racing
6th July	Racing and closing ceremony

7.2 Number of races:

<i>Class</i>	<i>Number</i>	<i>Races per day</i>
Mistral RS:One and RS:X	10	2
Mistral and Techno 293	10	2
Hobie 16	10	2
International 470 and 420	10	2
International 29er	10	2
International Laser	10	2
International Laser Radial	10	2
International Optimist	10	2

(a) One extra race per day may be sailed, provided that no class becomes more than one race ahead of schedule and the change is made according to SI 5

7.3 The scheduled time of the warning signal for the first race each day is 1100.

7.4 When there has been a long postponement and when more than one race or races, for two or more classes will be held on the same day, the warning signal for the first race and each succeeding race will be made as soon as practicable. To alert boats that a race or sequence of races will begin soon, an orange flag will be displayed with one sound signal for at least four minutes before a warning signal is displayed.

7.5 On the last day of the regatta no warning signal will be made after 1400.

8 CLASS FLAGS

Class flags will be class insignia on coloured backgrounds as follows:

<i>Class</i>	<i>Flag</i>
Mistral (men)	Blue flag
RS:One (women)	White Flag
RS:X (men)	Blue flag
RS:X (Women)	White Flag
Multihull-Hobie 16(open)	Blue Flag
International 470 (men)	White flag
International 29er (women)	White flag
International 420 (men)	Red with blue stripe flag
International 420 (women)	Red with blue stripe flag
International Laser (men)	White flag
International Laser Radial (open)	White flag
Techno 293 (male)	Blue flag
Techno 293 (female)	BlueFlag
International Optimist (male)	Red flag
International Optimist (female)	White Flag

9 RACING AREAS

9.1 Attachment 2 shows the approximate location of racing areas and is displayed on the official notice board.

9.2 The organising authority may reassign classes to racing areas, but not later than two hours before the scheduled warning signal. However, when flag AP is displayed ashore (instruction 6.2) the racing area may be changed until 15 minutes before AP is removed.

10 THE COURSES

10.1 The diagrams in Attachment 1 show the courses, including the approximate angles between legs, the order in which marks are to be passed, and the side on which each mark is to be left.

10.2 Course designations and course signals are as Attachment 1 .

10.3 No later than the warning signal, the Race Committee signal boat will display the approximate compass bearing of the first leg.

10.4 When there is a gate, boats shall sail between the gate marks from the direction of the previous mark and round either gate mark.

10.5 Trapezoid courses may use a Gate mark on the outer loop instead of a single “Mark 3”. This instruction if used will override the Course diagram. { Attachment 1 (b) and (c)}

11 MARKS

11.1 Marks 1, 2, 3, will be 1.5 meters high cylindrical inflated buoys. Their colours will be as follows:

Racing area Mark colour

A	Red :470,420,29-er,Hobie16
B	Yellow: Optimist, Laser, Laser Radial
C	Orange: RS:X, RS:One, Mistral, Techno 293

Mark 4P and 4S shall be

A	Orange
B	Pink
C	Yellow Square approx. 1 metre

11.2 New marks, as provided in instruction 13.1, will be of the same shape and colour as the original marks.

11.3 The starting marks will be the Race Committee signal boat at the starboard end and another Race Committee boat at the port end. Both boats will display orange flags

11.4 The finishing marks will be Race Committee boat at one end and a white cylindrical mark at the other.

11.5 A Race Committee boat signalling a change of a leg of the course is a mark as provided in instruction 13.2.

12 THE START

12.1 Races will be started by using rule 26.

12.2 The starting line will be between staffs displaying orange flags.

12.3 If flag U has been displayed as the preparatory signal, no part of a boat’s hull, crew, or equipment shall be in the triangle formed by the ends of the starting line and the first mark during the last minute before her starting signal. If a boat breaks this rule and is identified, she shall be disqualified without a hearing but not if the race is

restarted or resailed or postponed or abandoned before the starting signal. This changes rule 26.

12.4 Boats whose warning signal has not been made shall avoid the starting area during the starting sequence for other races.

12.5 A boat starting later than 4 minutes after her starting signal will be scored Did Not Start without a hearing. This changes rule A4.

13 CHANGE OF THE NEXT LEG OF THE COURSE

13.1 To change the next leg of the course, the Race Committee will lay a new mark (or move the finishing line) and remove the original mark as soon as practicable. When in a subsequent change a new mark is replaced, it will be replaced by an original mark.

13.2 Except at a gate, boats shall pass between the Race Committee boat signalling the change of the next leg and the nearby mark, leaving the mark to port and the Race Committee boat to starboard. This changes rule 28.

14 THE FINISH

The finishing line will be between staff displaying orange flag and the white mark.

15 PENALTY SYSTEM

15.1 For the multihull class rules 44.1 is changed so that the Two-Turns Penalty is replaced by the One-Turn Penalty.

15.2 For the Optimist class, boats are not exempted from displaying a red flag according to the second sentence of RRS 61.1(a). {Amends RRS 61.1(a) (2)}.

A boat required to display a flag shall do so until she is no longer racing, and shall inform the Race Committee of the boat being protested immediately after finishing. {Amends RRS 61.1(a), }

15.3 A boat that has taken a penalty or retired under rule 31 or 44.1 shall complete an acknowledgment form at the Jury Office, located in the Regatta Office Building, within the protest time limit.

15.4 Appendix P will apply as changed by instructions 15.1 and 15.5.

15.5 Rule P2.3 will not apply and rule P2.2 is changed so that it will apply to any penalty after the first one.

16 TIME LIMITS AND TARGET TIMES

16.1 Time limits and target times are as follows:

<i>Class</i>	<i>Time limit</i>	<i>Mark 1 time limit</i>	<i>Target time</i>
Mistral/RS:X/RS:One	60	20	40
Techno 293	60	20	40
Hobie 16	60	20	40
International 470	90	30	60
International 29er	90	30	60
International Laser	90	30	60
International Laser Radial	90	30	60
International Optimist	90	30	60

If no boat has passed mark 1 within the mark 1 time limit the race will be abandoned. Failure to meet the target time will not be grounds for redress. This changes rule 62.1(a).

- 16.2** Boats failing to finish within 20 minutes after the first boat sails the course and finishes will be scored Did Not Finish. This changes rules 35, A4 and A5.

17 PROTESTS AND REQUESTS FOR REDRESS

- 17.1** Protest forms are available at the Jury Office. Protests and requests for redress or reopening shall be delivered there within the protest time limit.

- 17.2** For each class, the protest time limit is 60 minutes after the last boat has finished the last race of the day.

- 17.3** Notices will be posted no later than 30 minutes after the protest time limit to inform competitors of hearings in which they are parties or named as witnesses. Hearings will be held in the jury room, located in the Regatta Office Building, beginning at the time posted.

- 17.4** Notices of protests by the Race Committee or jury will be posted to inform boats under rule 61.1(b).

- 17.5** A list of boats that, under instruction 15.4, have been penalized for breaking rule 42 will be posted.

- 17.6** Breaches of instructions 2, 3, 12.3, 19, 20, 21, 23, 24, 25&26 will not be grounds for a protest by a boat. This changes rule 60.1(a). Penalties for these breaches may be less than disqualification if the jury so decides. The scoring abbreviation for a discretionary penalty imposed under this instruction will be DPI.

- 17.7** On the last scheduled day of racing a request for reopening a hearing shall be delivered

- (a) Within the protest time limit if the requesting party was informed of the decision on the previous day;
- (b) No later than 30 minutes after the requesting party was informed of the decision on that day.

This changes rule 66.

- 17.8** On the last scheduled day of racing a request for redress based on a jury decision shall be delivered no later than 30 minutes after the decision was posted. This changes rule 62.2.

- 17.9** Decisions of the jury will be final as provided in rule 70.5.

- 17.10** The time limit to be met under rule N1.4 (b) shall be 30 minutes after the party has been informed of the panel's decision.

18 SCORING

- 18.1** The Low Point scoring system of Appendix A will apply for all classes. **RRS B8 is deleted.**

- 18.2** 3 races are required to be completed to constitute a series.

- 18.3** (a) When fewer than 6 races have been completed, a boat's series score will be the total of her race scores.
- (b) When 6 or more races have been completed, a boat's series score will be the total of her race scores excluding her worst score.
- 18.4** To request correction of an alleged error in posted race or series results, a boat shall complete a scoring enquiry form available at the Race Office.

19 SAFETY REGULATIONS

- 19.1** Check-out and check-in: Each competitor, intending to race, shall personally hand over his ID card to the Beach Master, when going out to race. When returning ashore each competitor shall personally report as soon as possible to the Beach Master, who will return him the ID card.

This will constitute as Sign out & Sign-in.

Penalties for breaches of this instruction may be imposed without a hearing. This modifies RRS 63.1.

- 19.2** A boat that realizes she forgot to Sign-out shall promptly report to the Race Committee afloat and inform it of the breach.
A boat that retires from a race shall notify the Race Committee as soon as possible

20 REPLACEMENT OF CREW OR EQUIPMENT

- 20.1** Substitution of competitors will not be allowed without prior written approval of the jury.
- 20.2** Substitution of damaged or lost equipment will not be allowed unless approved by the Race Committee. Requests for substitution shall be made to the committee at the first reasonable opportunity.

21 EQUIPMENT AND MEASUREMENT

A boat or equipment may be inspected at any time for compliance with the class rules and sailing instructions. On the water, a boat can be instructed by a measurer to proceed immediately to a designated area for inspection. For breaches of the class rules that affect neither performance nor safety, the Jury may impose at their discretion a penalty less than disqualification

22 OFFICIAL BOATS

Official boats will be marked as follows:

Category	Flag
Jury	white flag with black 'IJ'
Race Committee	racing area colour with area letter
Principal Race Officer	white flag with blue 'PRO'
VIP	white flag with blue 'VIP'
Rescue	red flag with white 'RESCUE'
Press, Photo and TV	green flag with white 'MEDIA'
Technical Delegate	white flag with blue 'T.D.'

23 SUPPORT BOATS

- 23.1 Coach boats shall stay outside areas where boats are racing from the time of the preparatory signal for the first fleet to start until all boats have finished or retired or the race committee signals a postponement, general recall or abandonment. Such restricted areas are defined as follows: not closer than 100 metres to any boat racing (except a boat in distress requiring assistance) or to a mark, layline or rhumbline, and inside the course trapezoid. Until the starting signal, coach boats shall be at least 100 metres to leeward of the starting line or its extensions. See diagrams in Attachment 3. They shall not communicate with boats while racing, except in case of emergency. If a support boat, when it is inside the restricted area, fails to keep clear and to leeward of all boats while racing, she may be excluded from the restricted area by the Race Committee without prior warning and without a hearing for the remaining part of the race in progress and/or for the subsequent race(s).
- 23.2 Should there be a long postponement the Race Committee will lower the orange flag, support boats may re-enter the restricted area and resume communication with the boats. Support boats shall stay outside the restricted area at all times when boats are racing.
- 23.3 Support boats are permitted to navigate from the start area to mark 2 area, on a trapazoid course outside the restricted area on Attachment 3 after the first class has started and the boats are approximately a quarter of the way up the first leg of the course. They shall navigate only on the left side of the course and at a distance of at least 100 meters from the restricted area as defined in the Attachment 3, or 100 metres from any racing boat, whichever is farther away.
- 23.4 Support boats shall register at the Race Office prior to the first scheduled race of the series, providing details of their boats. All teams support boats shall conspicuously display the national flag of their country of origin (600 x 400mm minimum) or 3 letter country code.
- 23.5 Support boats shall not enter the restricted area during the racing unless given prior approval by the Race Committee in charge of the respective race area. Such approval will be for one day at a time and may be cancelled by the Race Committee at its discretion at any time.
- 23.6 Any support boat considered by the Race Committee to have violated instruction 23 shall comply with any instructions given by the Race Committee. The Race Committee may request the international jury to conduct a hearing to investigate any alleged breach of instruction 23 and the jury may apply a penalty to any competing boat associated with the offending support boat. Any such penalty may be less than disqualification if the jury so decides.

24 TRASH DISPOSAL

Boats shall not put trash in the water. Trash may be placed aboard support and Race Committee boats.

25 BERTHING

Boats shall be kept in their assigned places in the Boat Park / harbour.

26 RADIO COMMUNICATION

A boat shall neither make radio transmissions while racing nor receive radio communications not available to all boats. This restriction also applies to mobile telephones.

27 PRIZES

Prizes will be given as follows: To the top 3 positions in each class/category. .

28 DISCLAIMER OF LIABILITY

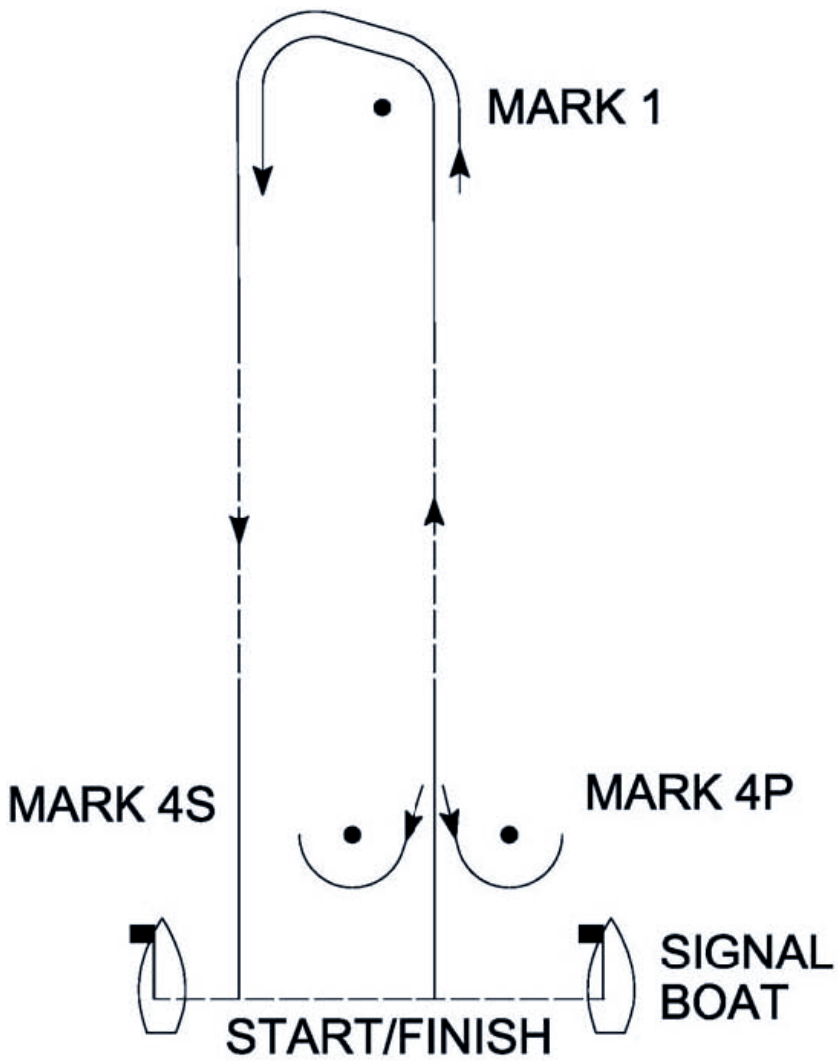
Competitors participate in the regatta entirely at their own risk. See rule 4, Decision to Race. The organizing authority will not accept any liability for material damage or personal injury or death sustained in conjunction with or prior to, during, or after the regatta.

29 INSURANCE

Each participating boat shall be insured with valid personal insurance with a minimum cover of 100,000,000 KRW per event or the equivalent.

ATTACHMENT 1

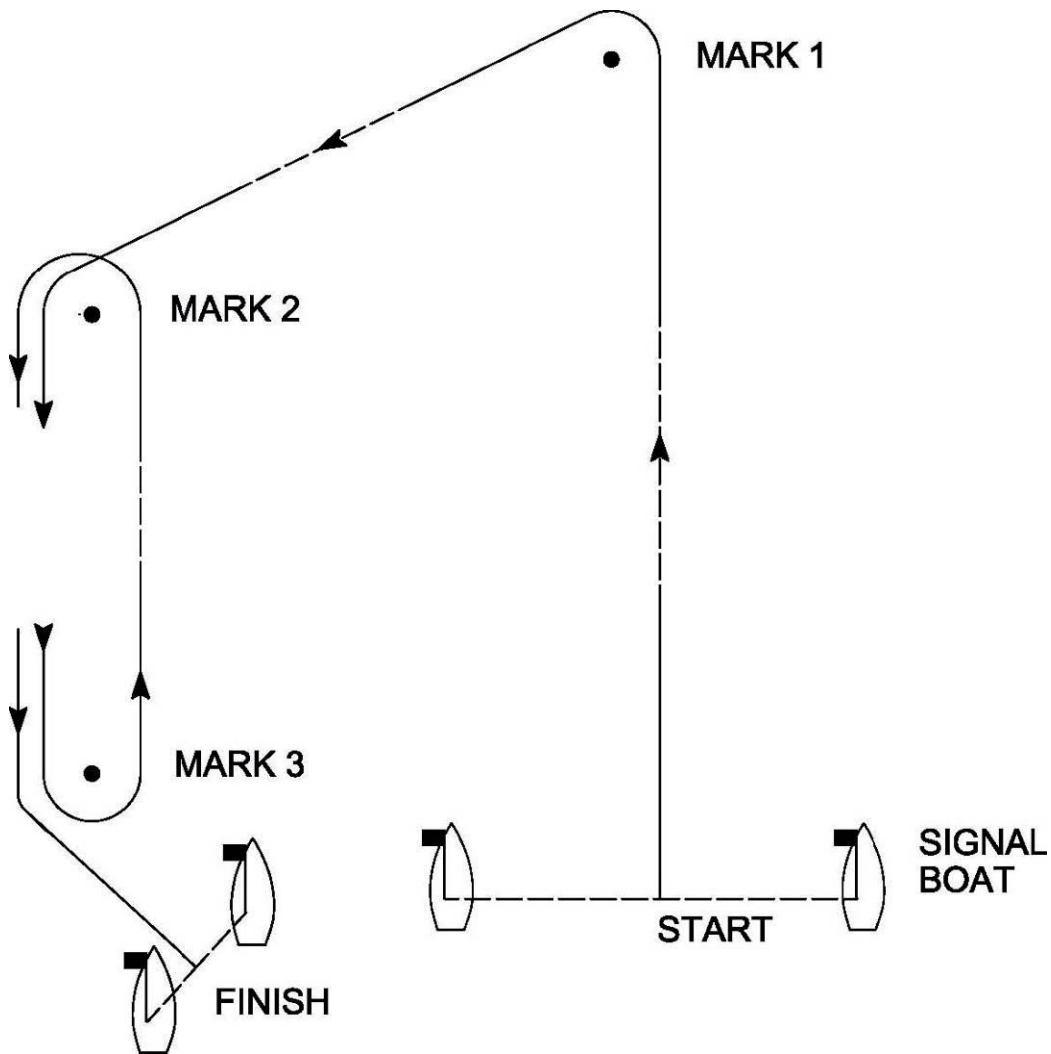
(a) WINDWARD-LEEWARD



Course signal	Mark rounding order
W 1	START - 1 - FINISH
W 2	START - 1 - 4S/4P - 1 FINISH
W 3	START - 1 - 4S/4P - 1 - 4S/4P - 1 - FINISH
W 4	START - 1 - 4S/4P - 1 - 4S/4P - 1 - 4S/4P - 1 - FINISH

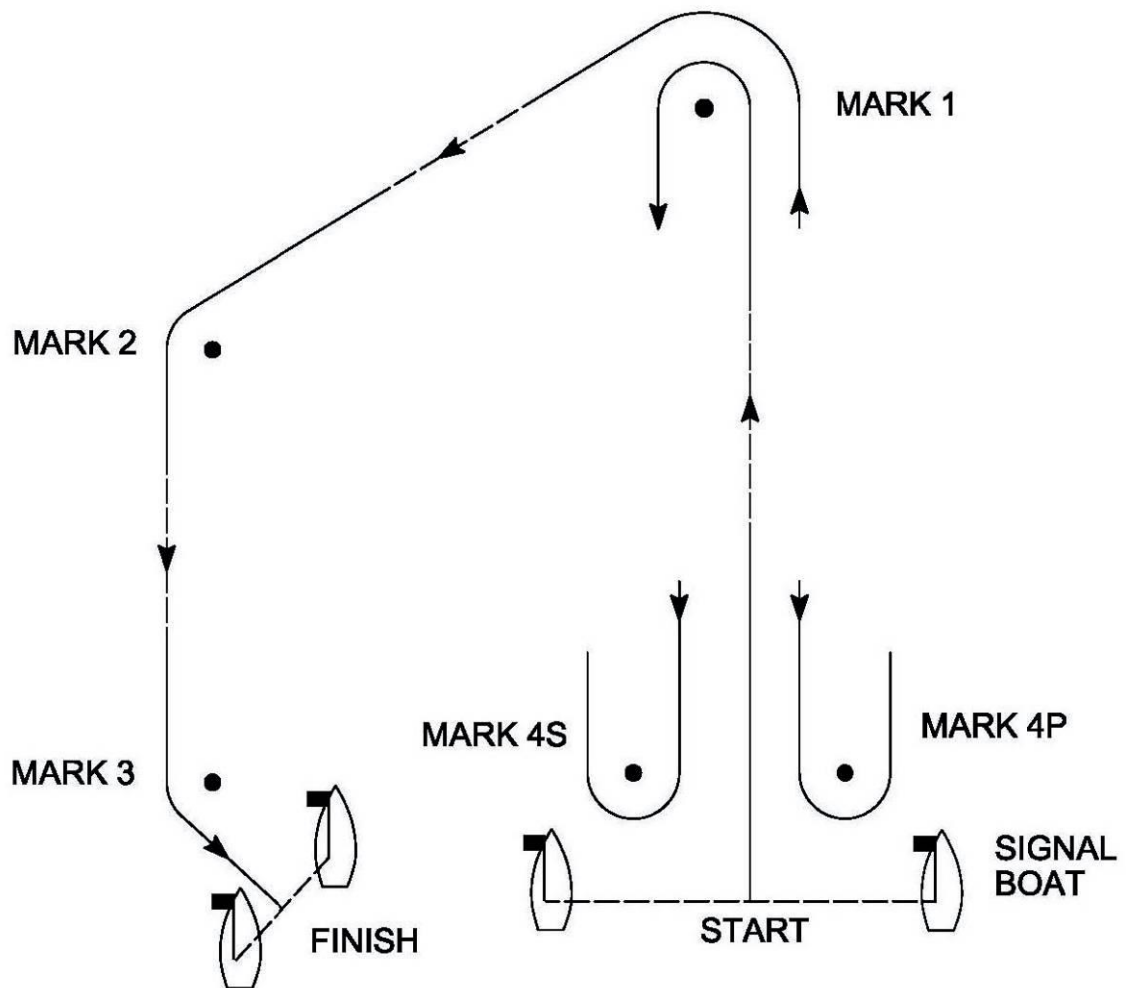
Trapezoid Courses

(b) TRAPEZOID OUTER



Course signal	Mark rounding order
O 1	START - 1 - 2 - 3 - 2 - 3 - FINISH
O 2	START - 1 - 2 - 3 - 2 - 3 - 2 - 3 - FINISH
O 3	START - 1 - 2 - 3 - 2 - 3 - 2 - 3 - 2 - 3 - FINISH
O 4	START - 1 - 2 - 3 - 2 - 3 - 2 - 3 - 2 - 3 - 2 - 3 - FINISH

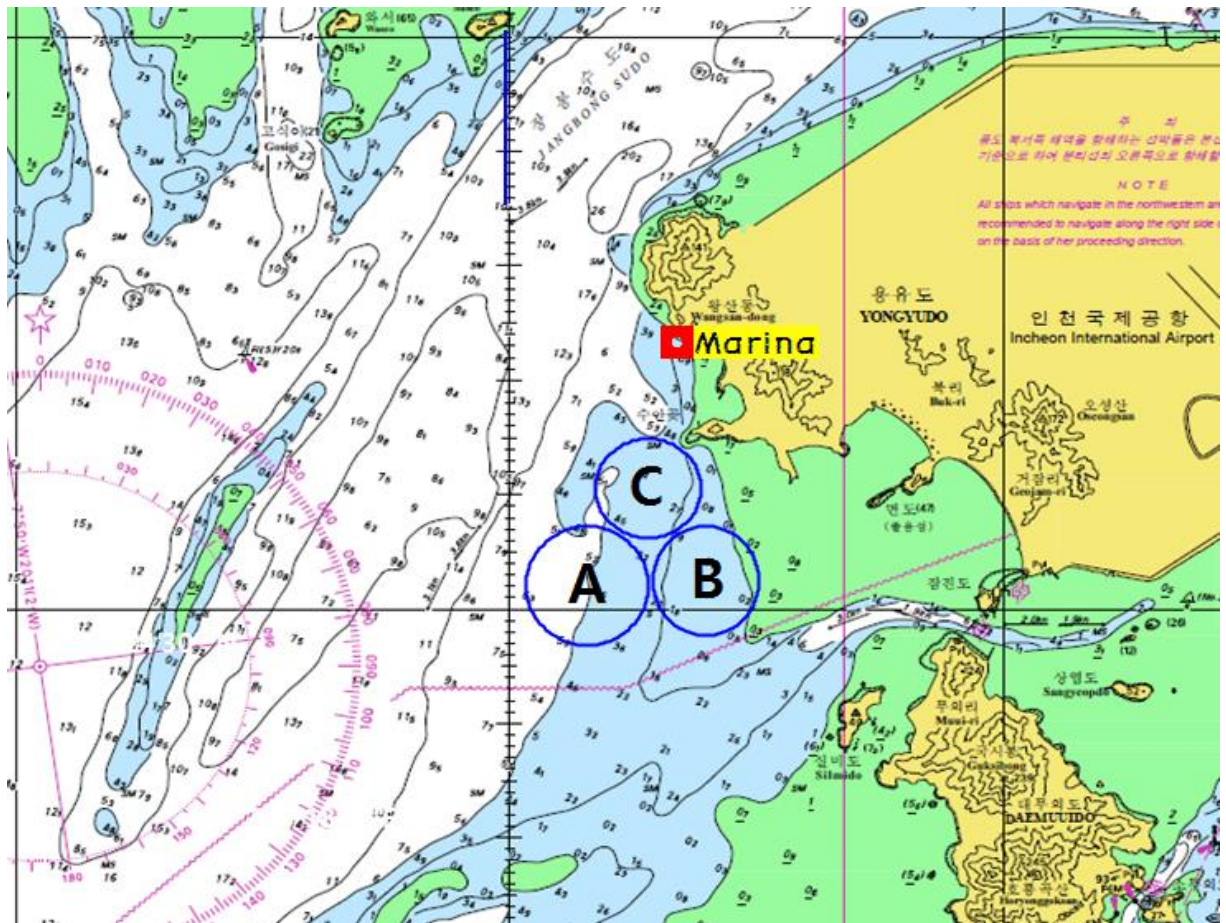
(c) TRAPEZOID INNER



Course signal	Mark rounding order
I 1	START - 1 - 4S/4P - 1 - 2 - 3 - FINISH
I 2	START - 1 - 4S/4P - 1 - 4S/4P - 1 - 2 - 3 - FINISH
I 3	START - 1 - 4S/4P - 1 - 4S/4P - 1 - 4S/4P - 1 - 2 - 3 - FINISH
I 4	START - 1 - 4S/4P - 1 - 4S/4P - 1 - 4S/4P - 1 - 4S/4P - 1 - 2 - 3 - FINISH

ATTACHMENT 2

Racing Areas (Field of Play)

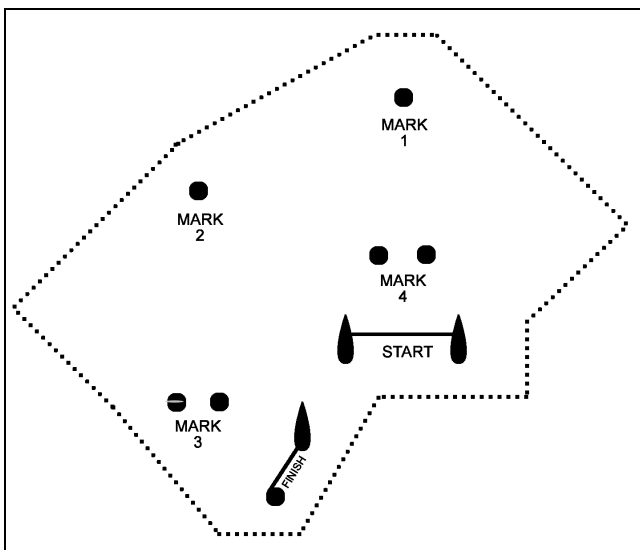


ATTACHMENT 3

RESTRICTED AREA DEFINITION FOR APPLICATION OF INSTRUCTION 23

The "restricted area" as mentioned in instruction 23 consists of any area within the perimeter illustrated here below (dotted lines).

Olympic trapezoid course



Windward-leeward course

